



## Marine Panel Rail & Stanchion Mounts **SLB Series Panel Mounts**

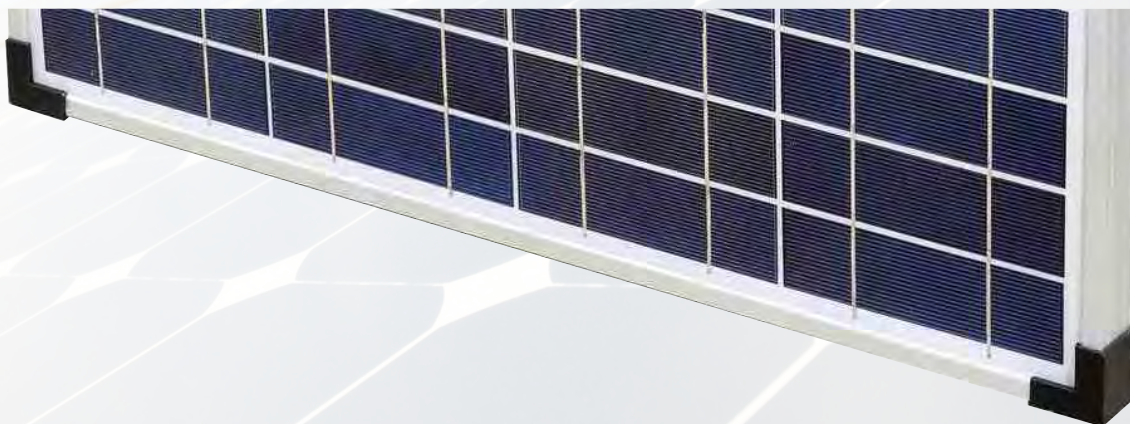
These marine grade mounts are specifically designed to work with the Solarland SLP Series Multi-Crystalline panels.

Each Cross Kit consists of stainless steel flat bar/s, marine grade stanchion clamp/s and stainless steel hardware for attaching the panel and clamp.

The image above shows 2 x SLBRKT-11 mounts used with 2 x SLP050-12U panels.

*\* Rubber corner protectors for all solar panels are available individually. These protectors cover the sharp metal corners to avoid personal injury and potential sail damage.*

*\* Rubber Corner Protectors Available Individually - 511200008*



↑  
511200008

## Single Bar Kits

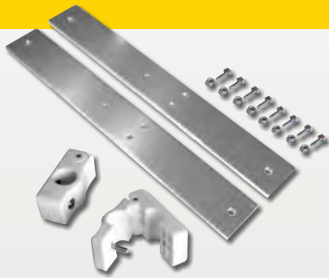


**Each kit includes:**

- 1 x 2" Stainless Steel Flat Bar
- 1 x Marine Grade Clamp
- Hardware Kit

<b>SLBRKT-08</b>	Use with SLP010-12U and SLP020-12U
<b>SLBRKT-10</b>	Use with SLP030-12U

## Double Bar Kits



**Each kit includes:**

- 2 x 2" Stainless Steel Flat Bar
- 2 x Marine Grade Clamp
- Hardware Kit

<b>SLBRKT-11</b>	Use with SLP040-12U, SLP050-12U, SLP060-12U, SLP080-12U, SLP085-12U, SLP090-12U & SLP100-12U
<b>SLBRKT-13</b>	Use with SLP065-12M 'Skinny' Panel

## Stanchion Mount



**Each kit includes:**

- 1 x 72" Stainless Steel Tube with End Covers
- 1 x Expandable Brace for Panel Support
- Hardware Kit

This kit is ideally used with the Solarland® SLP065-12M 'Skinny' panel and the SLBRKT-13 mount.